

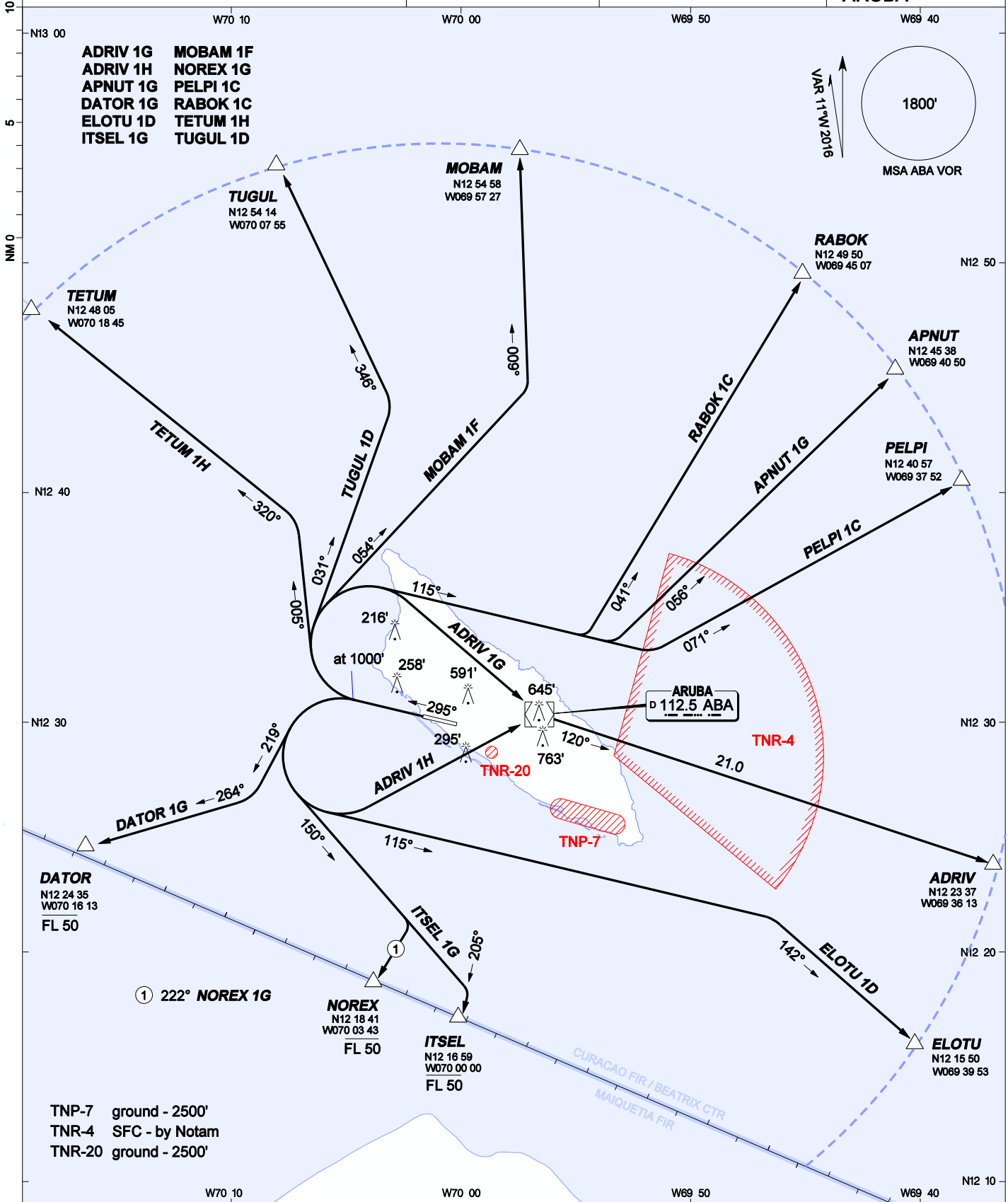
AIP DUTCH CARIBBEAN

VOR DEPARTURES RWY 29 - ICAO

AD ELEVATION: 62'
TRANS LEVEL: FL 40
TRANS ALT: 2500' (2438')

BEATRIX:
APP/TWR 120.9 GND 118.0
APRON 121.6 ATIS 132.1

REINA BEATRIX
INT'L (TNCA)
ARUBA



1. Climb on runway course 295° to 1000' before turning. Follow assigned route.

CHANGES: New procedure.

NEW FIXES:

ELOTU	N12 15 49.93	W069 39 52.84
PELPI	N12 40 56.60	W069 37 51.80
RABOK	N12 49 49.83	W069 45 07.00
TUGUL	N12 54 13.98	W070 07 55.25